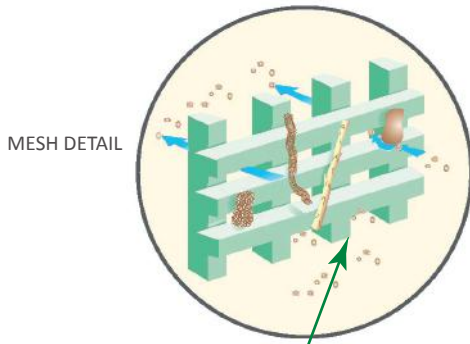
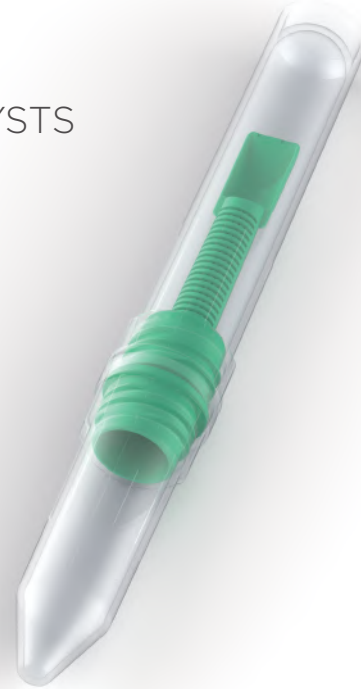


# FOR FAECAL CONCENTRATION OF

HELMINTH OVA AND LARVAE / PROTOZOA CYSTS AND OOCYSTS

APACOR

Mini Parasep® SF  
FAECAL PARASITE CONCENTRATOR



SELF STANDING  
SAMPLE CHAMBER

MIXING CHAMBER

INTEGRAL  
SPOON

#### Filter

A triple stage matrix filtration. Large particles are rejected without obscuring filtration. Recovery rate with Parasep® is comparable to traditional sieve method, ie: Ridley-Allen. The vertical filter enclosed design is patented.

#### Debris Trap

Rejected particles are trapped to prevent extrusion into the Sedimentation Cone during centrifugation.

#### Air/Liquid Seal and Safety Lock

The 'seal' prevents the release of biohazardous material. The 'lock' ensures the Mixing Chamber and Filter are removed together for safe disposal.

#### Sedimentation Cone

Sediment forms in the base of the cone allowing examination for the presence of helminth eggs or larvae and protozoa cysts or oocysts.

#### Health and Safety Benefits

- Totally enclosed/sealed process
- Reduced reagent volumes
- No cleaning required
- Single use, no sample contamination
- Ready to use systems available

#### Performance Benefits

- Optimum sample recovery
- Enhanced sample clarity
- Rapid four step process
- Human resources optimised
- Easy patient identification
- Fits all 15ml centrifuge buckets



## PARASITOLOGY

SINGLE USE IN VITRO DIAGNOSTIC DEVICE



FAECAL PARASITE CONCENTRATOR

# Mini Parasep® SF

## Procedure

### STEP 1 - SAMPLE PREPARATION

#### Fresh Samples

For empty Parasep®, unscrew lid and add 3.3ml of fixative and one drop of surfactant (eg: Apacor Triton X solution) to the mixing chamber.

Alternatively use the reagent ready Mini Parasep® SF.

Introduce a level scoop of faecal sample to the fixative using the spoon on the end of the Mini Parasep® SF filter.

Mix in thoroughly with the Mini Parasep® SF spoon. If the sample is hard, break it up with the end of the spoon.



### STEP 2 - EMULSIFICATION

Seal the Mini Parasep® SF by screwing in the filter/ sedimentation cone unit.

Vortex or shake to emulsify with the sedimentation cone pointing upwards.



### STEP 3 - CENTRIFUGATION

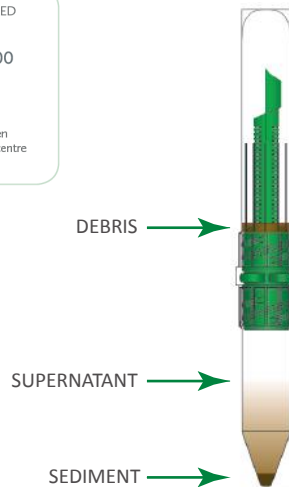
Invert the Mini Parasep® SF and centrifuge at 400g for two minutes.  
(J. Clin. Microbiol. doi:10.1128/JCM.00838-15).

Mini Parasep® SF fits all 15ml centrifuge buckets.

NOTE: TO CALCULATE THE REQUIRED RPM FOR ANY CENTRIFUGE.

$$RPM = \sqrt{\frac{g}{1.12r}} \times 1000$$

RPM - rotor speed in revs/min.  
g - centrifugal force (max. 1000g)  
r - radius, horizontal distance between sedimentation cone tip and spindle centre measured in mm.

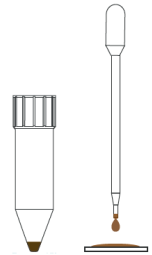


### STEP 4 - EXAMINATION

#### Direct Method

Unscrew and discard the filter and mixing tube. Pour off all the liquid above the sediment.

Pipette one drop of sediment onto a slide, and cover with cover-slip. Alternatively, following laboratory SOP for slide preparation.

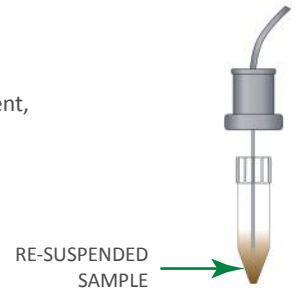


OR

#### Semi-automated System - ParaSys™

Unscrew and discard the filter and mixing tube. Pour off all the liquid above the sediment.

Insert aspirator into the sediment, press DILUTE to add saline to the sediment. Shake or vortex to re-suspend sample. Press SAMPLE to draw 100µl into the ParaSlide™.



See label for storage conditions and expiry date. Please adhere to the following guidelines when handling Mini Parasep® SF. To avoid cross contamination the Mini Parasep® SF device should remain closed at all times except when introducing the sample or when retrieving the final concentrated sample for examination.

**Mini Parasep® SF is available empty or reagent ready**  
**Please ask for details**

Products can be ordered direct from Apacor or from an appointed distributor  
Visit our website for all the latest information [www.apacor.com](http://www.apacor.com) or email on: [sales@apacor.com](mailto:sales@apacor.com)

**Vertrieb in Österreich:**

**Serobac**  
Labor | Pflege | Fitness

Serobac Labordiagnostika GmbH  
Neulinggasse 29 / Stiege 1 / Top 15  
A - 1030 Wien

Tel: 01 / 713 72 92  
Fax: 01 / 712 37 99

[serobac@serobac.at](mailto:serobac@serobac.at), [www.serobac.at](http://www.serobac.at)



UNIT 5 SAPPHIRE CENTRE  
FISHPONDS ROAD, WOKINGHAM  
BERKSHIRE, RG41 2QL, ENGLAND  
TEL: +44 (0)118 979 5566  
FAX: +44 (0)118 979 5186

